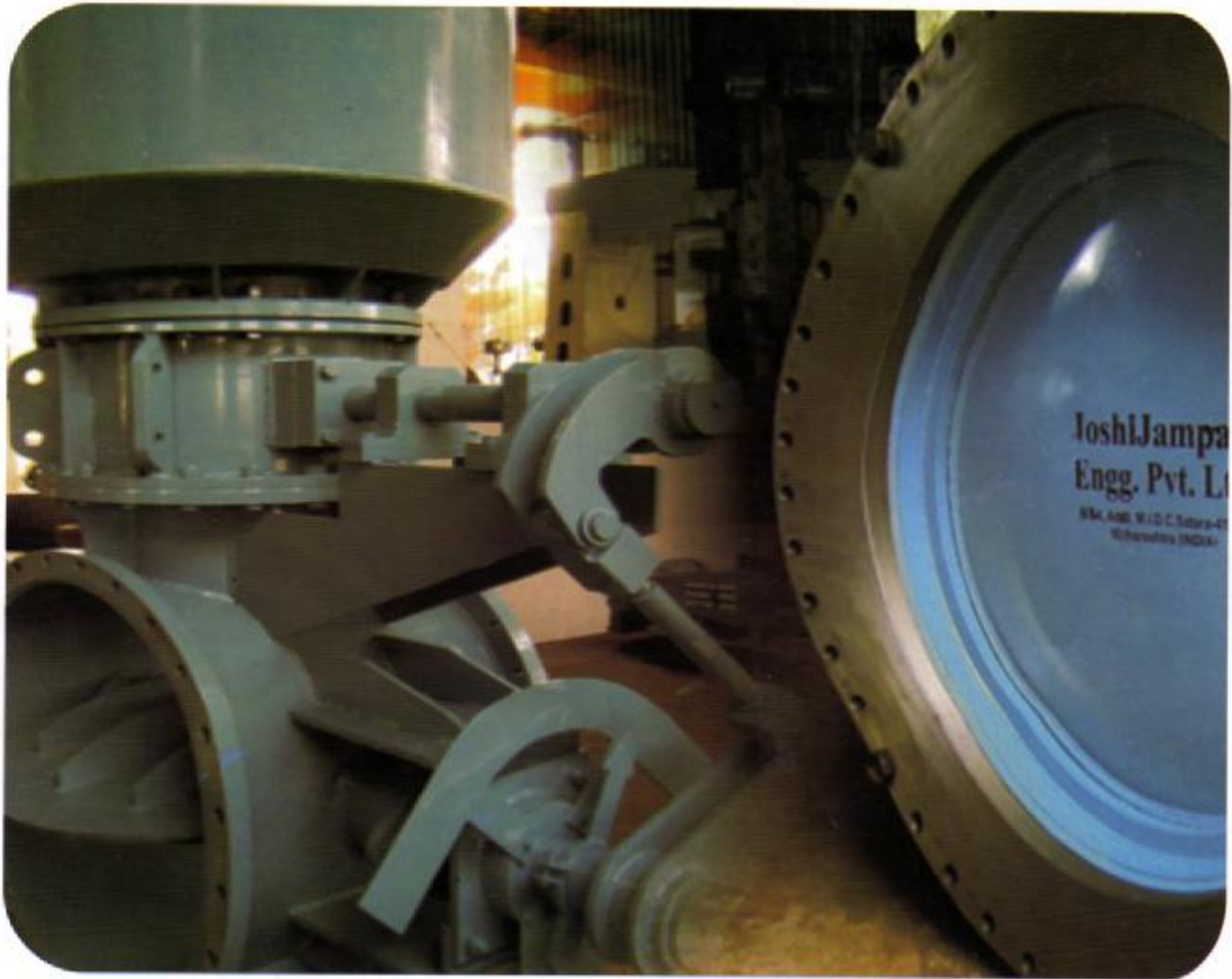




Joshi Jampala



An ISO 9001 : 2000 Company



**SPECIAL PURPOSE VALVES & DAMPERS
FOR GAS & AIR LINES**

**eXperience
cellence**

HOT BLAST VALVE

- Specially designed for isolation of STOVES from Hot Blast Main
- Floating Gate Type, Refractory Lined Body & Disc with Water-cooled Design suitable for 1200° C & pressure 5 bar.
- Size Range - Refractory ID - 300 mm to 2000 mm

Speciality

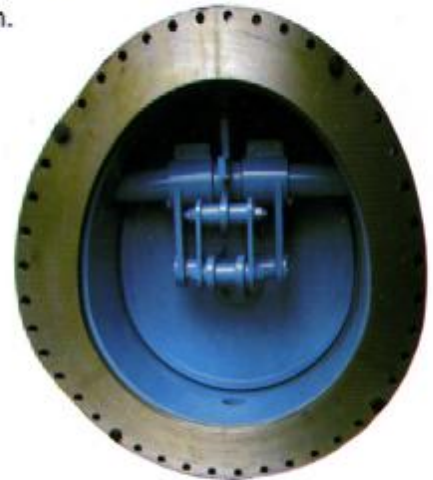
- Specially designed **water-cooling jackets**, ensure water is filled up All the time & complete cooling of valve body & gate. The flow path & velocity of water is designed to ensure no air pocket is formed & thus possibility of calcareous deposition is minimized.
- **Refractory lining** is provided in such way that heat loss to cooling water is minimized & critical parts of valve are not directly exposed to flow of hot gases.
- Specially designed stuffing boxes ensure leak tightness to atmosphere at the same time maintains the **Floating Gate** feature of the valve.
- Wedges can be provided to ensure leak tightness at low pressure. (Especially for Burner Cut off valves)
- Used as **Hot Blast Valve, Burner Cut-off Valve & Back Draught Valve** in Blast Furnace.
- Also used for isolation of Hot Gases in other industries.
- **Drive** - Electric / Hydraulic / Manual



Special Dampers for WHRB inlet & outlet are also available.
Temp. Upto 1550° C.
Size- Upto 3500 ND.

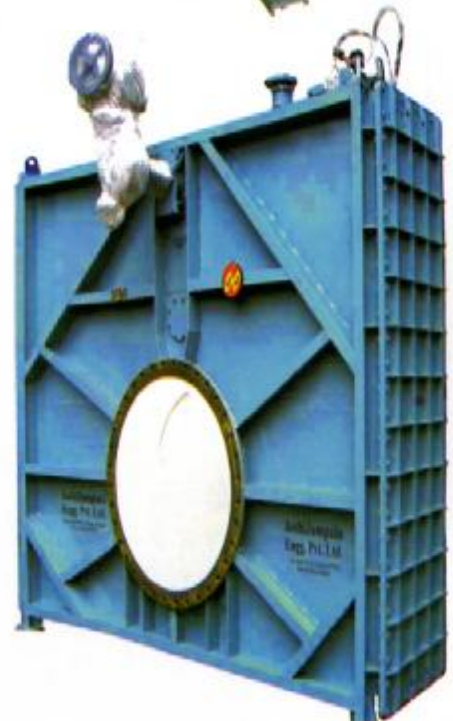
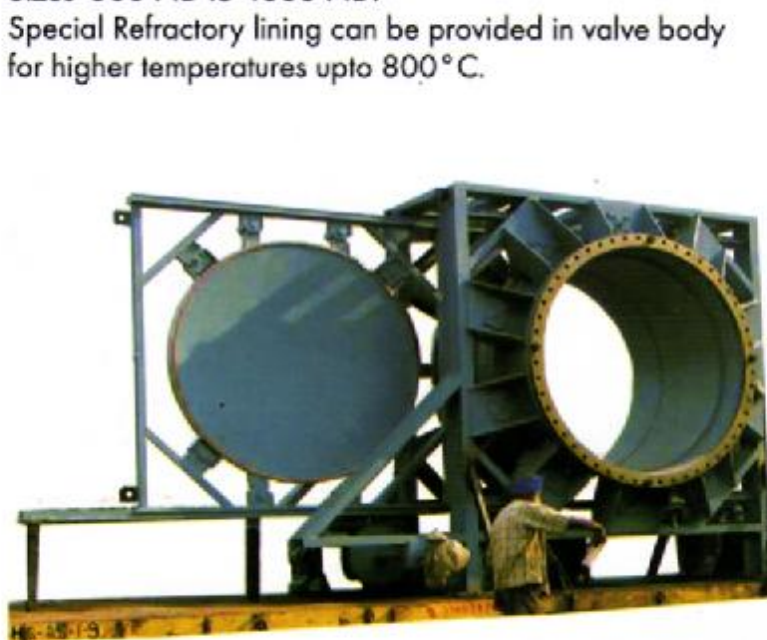
LEVER VALVE

- Specially designed Lever & Linkages kinematics.
- Kinematics guides the disc movement such that disc moves parallel to seat and then turn 90 degrees ensuring no rubbing of seal and seating surface enhancing seal life.
- **Nitrile, Viton, Silicon rubber** OR **Asbestos seal** is used to achieve zero leakage at low temperature. For high temperature (above 200° C) sealing surfaces are hard faced, machined, ground & lapped to achieve high degree of isolation.
- **Drive**- Electrical, Hydraulic, Pneumatic OR Manual.
- **Size Range** - ND 300 mm Up to 4000 mm
- Ideal valve for **Quick Shut-off**.



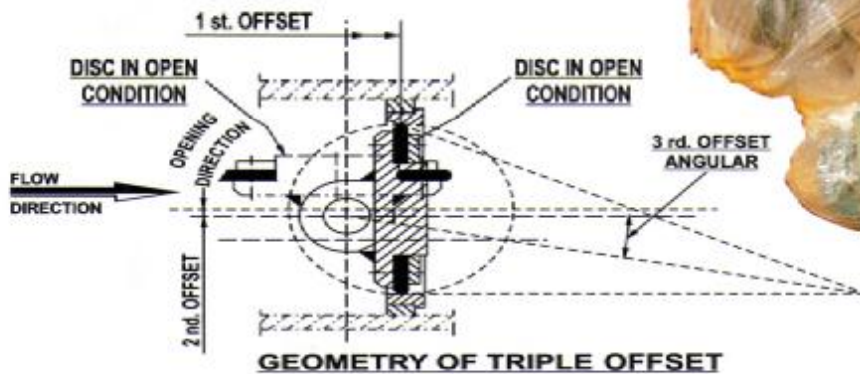
GOGGLE VALVE

- Special Valve for isolation of Toxic / Inflammable gases.
Man safe isolation same as blanking plate.
Expansion bellow, clamping de-clamping mechanism, disc-centering mechanism ensures 100% isolation & free movement of disc during operation.
- Valve can be **encased** to eliminate risk of gas leakage to atmosphere during operation for Special Requirements.
- Pressure upto 3 bar & temp. Upto 500° C.
- Sizes- 300 ND to 4000 ND.
Special Refractory lining can be provided in valve body for higher temperatures upto 800° C.



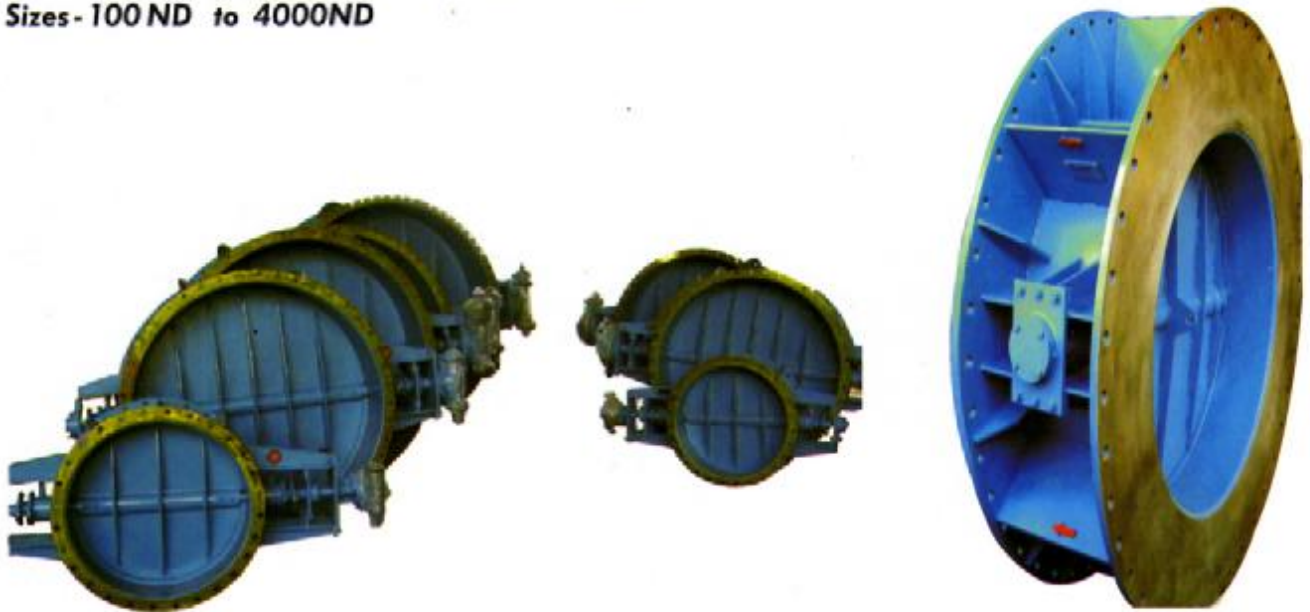
DOUBLE / TRIPLE ECCENTRIC BUTTERFLY VALVE

- Universally accepted design in fabricated construction to suit Specific requirement.
- **Special sealing** geometry & seal shape ensures zero leakage and free movement of disc over more than 95% of travel.
- **Molded Rubber seal** without joint eliminates possibility of leakage thru joint.
- Outboard stuffing boxes and bearings for easy maintenance.
- Drive- manual, electrical, hydraulic or pneumatic.
- Size - 200 ND to 4000 ND
- Temperatures up to 750 °C
- **State of art laminar seal for temperatures above 200° C.**



REGULATING DUTY BUTTERFLY VALVE

- Ideal valve for **Flow Regulation** purpose.
 - Fabricated construction to suit customization.
 - Outboard bearings & stuffing boxes easy for maintenance in line.
 - Simple & sturdy design - reliable for severe duty conditions / Low resistance to flow.
 - Drive- electrical, Pneumatic or Manual.
 - Electronic positioner & position transmitter are provided.
- Sizes - 100 ND to 4000ND**



HOT GASES BLEEDING / BACK DRAFTING VALVE

- Specially designed valve for creating back draught & venting of hot gases
- **Cone and sphere** sealing geometry achieves high degree of isolation.
- **Toggle mechanism** backed by designed spring column gives continuous sealing force on seating surface and keeps the valve in close-locked position.
- Pressures up to 4 bar
- Temperatures up to 1200 °C
- Hydraulic actuation ensures smooth and positive operation.
- **Sizes - 300 ND to 1000 ND**



BLEEDER VALVE

- Fabricated valve used for venting / bleeding of gases.
- **Cone and sphere** sealing geometry achieves high degree of isolation.
- In special designs soft seals / double sealing arrangement can be provided.
- Dead weight is used to keep the valve closed when no need of bleeding of gases / air.
- Electric / Manual Winch drive is used to operate the valve.



SNORT VALVE

- Each valve designed for specific technical specifications.
- Custom designed valve with **blow off device**.
- Regulate flow of blast (air) going to blast furnace & vent out balance quantity to atmosphere through blow off device without disturbing blower.
- Specially designed double eccentric Butterfly valve mechanically linked with main control valve shaft.
- **Acoustically designed silencer** reduces the noise level of blow off air jet upto 80db in special cases
- Special Silencer to reduces the noise level upto 50db are also available



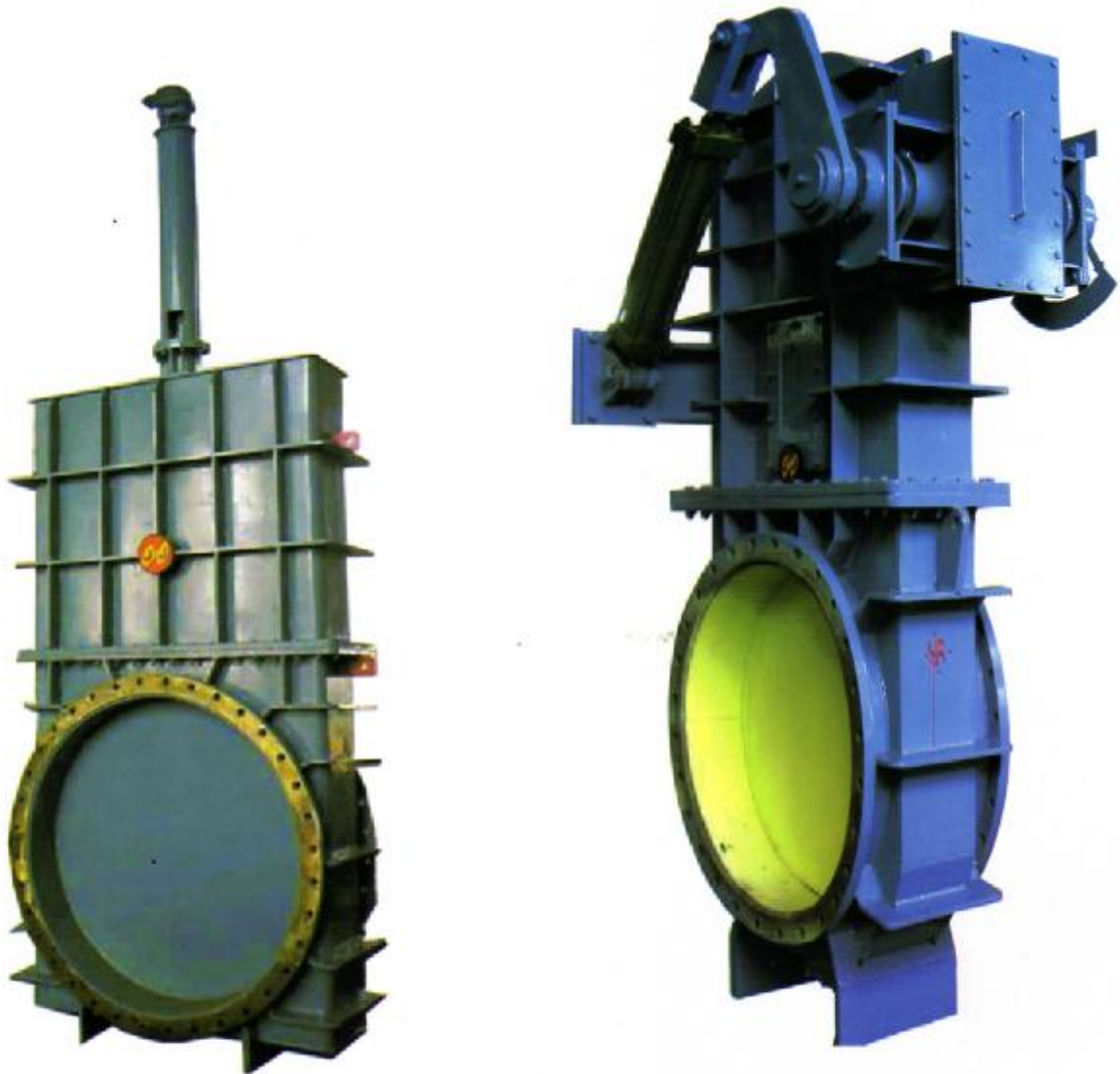
VALVES FOR GCP, DUST CATCHER, COKE OVENS & OTHER AREAS

- Dust extraction valve.
- Dust valve
- Dust catcher isolation valve
- Dust catcher safety valve
- Group Throttle valve
- Furnace top charging pressurising, depressurising valves.
- Single disc gate valves (with or without equalizing port)
- Slide Gate Valve (High Temperature Damper).



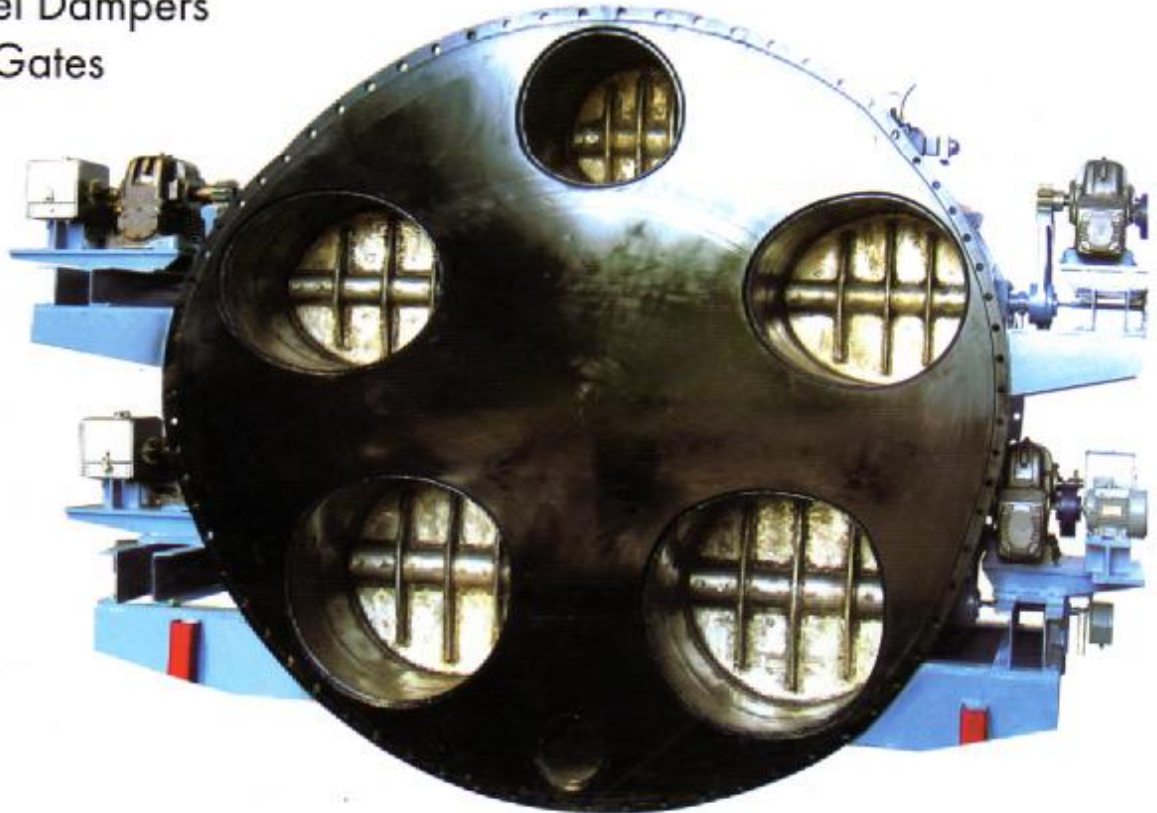
SINGLE DISC / DOUBLE DISC GATE VALVE

- Rising spindle, Flexible Wedge, Parallel Seat Design.
- Specially designed fabricated valve for isolation of gases.
- Ideal valve for **Highly Toxic Gas Line Isolation**.
- Metal to metal double sealing of hard faced, machined, ground and lapped seating surface achieves high degree of isolation.
- Centrally placed **flexible collapsible wedge** design exerts sealing force in close position and collapses while opening avoiding rubbing of seating surface while opening and closing enhancing life of valve.
- **Parallel seating** surface makes the valve more sturdy minimizing deflection due To internal pressure.
- Water can be filled between two discs to act as **water** seal for **100 % Man-safe Isolation**.
- Provision is made for steam purging for melting tar & drain
Ports are provided for removal of molten tar & other trapped material.
- Drive- Manual or Electrical.
- Size- 500 ND to 3000ND



OTHER VALVES

- Guillotine Dampers
- Louvers / Multilouvers
(Circular, Square, Rectangular)
- Butterfly Dampers
(Circular, Square, Rectangular)
- Slide Gates
- Tunnel Dampers
- Rod Gates



Throttle Valves Group Assembly (BF Gas Header Valve)



Joshi Jampala Engineering Pvt. Ltd.
M64, Addl. MIDC, Satara-415004.
Maharashtra, India
Tel.: + 91 2162 240097/240017
E-mail:- joshijampala@vsnl.com